

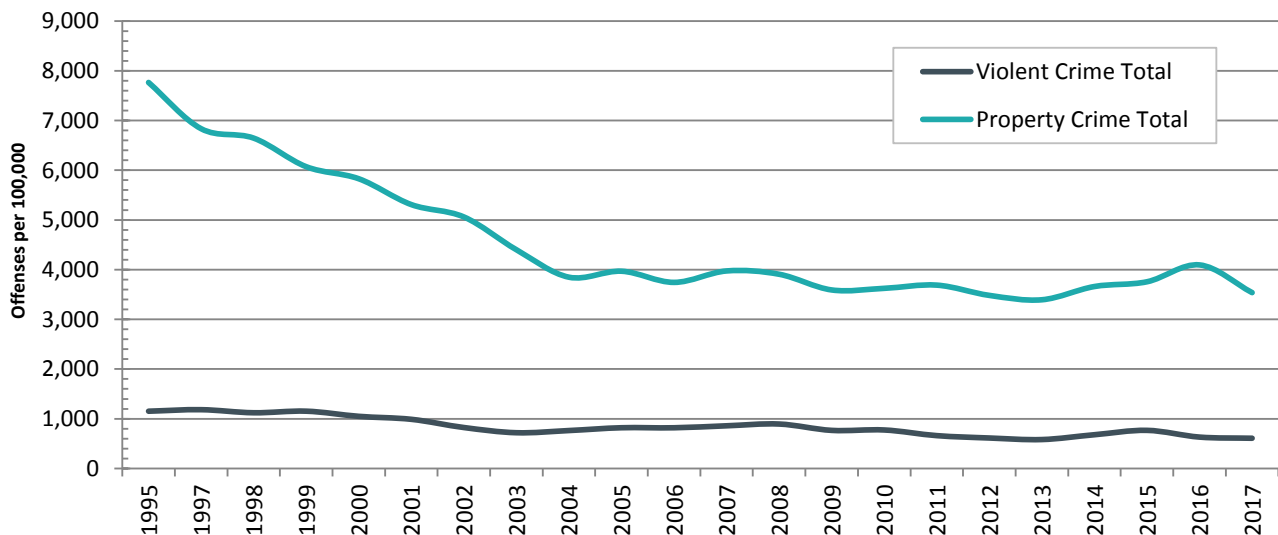
Trend: On a per capita basis, the overall frequency of property and violent crimes in the Tallahassee MSA in the 2010s has been lower than during the 1990s.

| Year | Violent Crime | | | | | Property Crime | | | |
|------|---------------------------------------|-----------------------|---------|--------------------|----------------------------|----------------|---------------|---------------------|-----------------------------|
| | Murder and non-negligent manslaughter | Forcible sex offenses | Robbery | Aggravated assault | <i>Violent Crime Total</i> | Burglary | Larceny-theft | Motor vehicle theft | <i>Property Crime Total</i> |
| 1995 | 7.4 | 68.4 | 321.1 | 755.3 | 1,152.3 | 1,717.9 | 5,425.8 | 621.6 | 7,765.3 |
| 1996 | - | - | - | - | - | - | - | - | - |
| 1997 | 4.5 | 72.5 | 268.0 | 838.1 | 1,183.1 | 1,316.5 | 5,034.4 | 484.1 | 6,835.0 |
| 1998 | 4.1 | 58.1 | 266.9 | 792.0 | 1,121.1 | 1,533.9 | 4,645.8 | 465.9 | 6,645.7 |
| 1999 | 3.4 | 79.4 | 241.6 | 828.5 | 1,153.0 | 1,422.3 | 4,106.4 | 541.9 | 6,070.6 |
| 2000 | 4.7 | 66.2 | 212.4 | 765.8 | 1,049.1 | 1,475.7 | 3,946.7 | 405.8 | 5,828.2 |
| 2001 | 4.8 | 70.9 | 211.4 | 701.9 | 989.0 | 1,353.5 | 3,526.4 | 428.9 | 5,308.8 |
| 2002 | 4.7 | 77.3 | 176.8 | 565.3 | 824.1 | 1,271.7 | 3,416.2 | 372.0 | 5,060.0 |
| 2003 | 3.6 | 71.3 | 138.4 | 506.2 | 719.4 | 1,146.9 | 2,931.7 | 321.7 | 4,400.2 |
| 2004 | 5.7 | 76.1 | 129.5 | 552.0 | 763.2 | 1,259.7 | 2,245.8 | 342.2 | 3,847.7 |
| 2005 | 5.9 | 62.8 | 155.1 | 595.9 | 819.7 | 1,249.0 | 2,409.3 | 310.2 | 3,968.5 |
| 2006 | 3.2 | 70.2 | 171.2 | 574.4 | 819.0 | 1,142.6 | 2,323.4 | 277.8 | 3,743.8 |
| 2007 | 2.4 | 61.0 | 217.3 | 578.1 | 858.8 | 1,309.4 | 2,375.7 | 288.7 | 3,973.9 |
| 2008 | 4.3 | 51.7 | 226.1 | 612.4 | 894.5 | 1,331.7 | 2,363.3 | 212.5 | 3,907.5 |
| 2009 | 3.6 | 46.6 | 166.9 | 549.7 | 766.8 | 1,341.0 | 2,109.2 | 141.5 | 3,591.7 |
| 2010 | 5.2 | 50.3 | 162.4 | 557.0 | 774.9 | 1,181.0 | 2,291.2 | 152.2 | 3,624.4 |
| 2011 | 4.8 | 42.2 | 167.6 | 446.5 | 661.1 | 1,247.0 | 2,295.3 | 146.3 | 3,688.6 |
| 2012 | 5.9 | 44.0 | 163.3 | 400.2 | 613.4 | 1,088.3 | 2,202.8 | 190.8 | 3,481.8 |
| 2013 | 4.5 | 58.9 | 120.1 | 398.8 | 582.3 | 859.7 | 2,374.2 | 160.2 | 3,394.1 |
| 2014 | 4.8 | 70.2 | 93.8 | 510.3 | 679.2 | 941.6 | 2,479.1 | 240.2 | 3,660.9 |
| 2015 | 6.6 | 80.9 | 122.3 | 557.2 | 767.1 | 832.7 | 2,602.3 | 321.3 | 3,756.3 |
| 2016 | 4.5 | 74.6 | 127.5 | 425.0 | 631.6 | 871.1 | 2,869.0 | 355.4 | 4,095.4 |
| 2017 | 6.5 | 75.0 | 107.7 | 419.1 | 608.4 | 662.3 | 2,620.8 | 254.9 | 3,538.0 |

Note: Offenses per 100,000. Property crimes include burglary, larceny, and motor vehicle theft. Violent crimes include murder, forcible sex offenses, robbery, and aggravated assault.

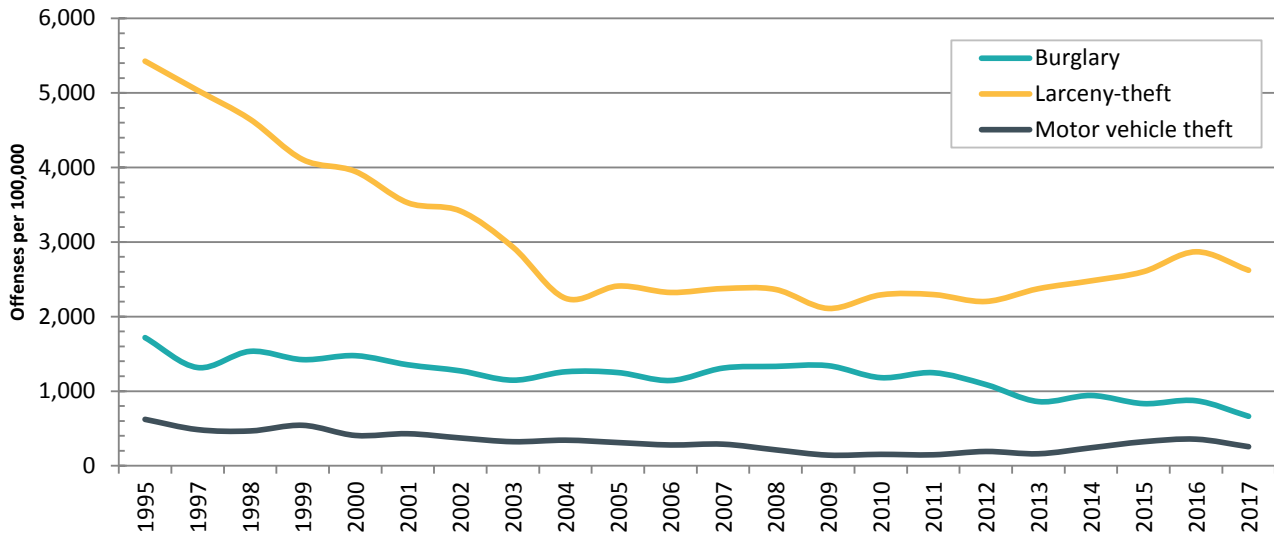
Source: FBI UCR

Index of Property and Violent Crimes in Tallahassee MSA



Trend: On a per capita basis, the overall frequency of property and violent crimes in the Tallahassee MSA in the 2010s has been lower than during the 1990s.

Index of Property Crime Offenses in Tallahassee MSA



Index of Violent Crime Offenses in Tallahassee MSA

