



Community and Environment
Public Safety:
Leon County Crime Rate

Trend: On a per capita basis, the overall frequency of property crime in Leon County in 2021 was lower than any year in the past three decades, and violent crime frequency, although up from 2018-2020, was lower than any other year during 1991-2017.

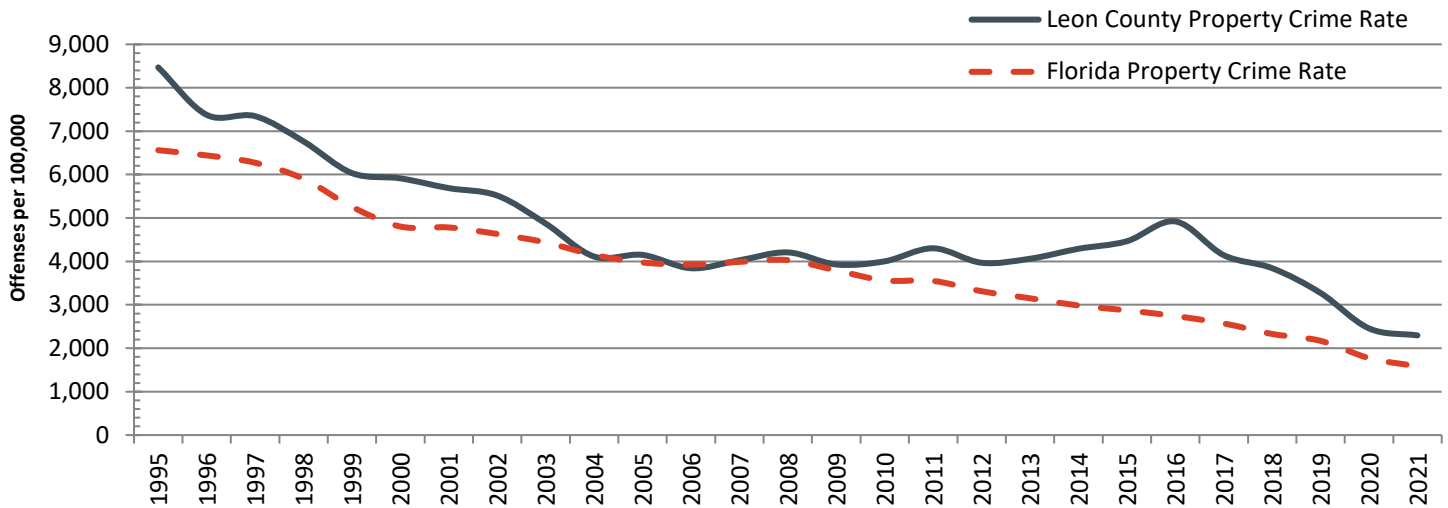
Year	Leon County Property Crime Rate	Florida Property Crime Rate	Leon County Violent Crime Rate	Florida Violent Crime Rate
1995	8,469.5	6,561.5	1,152.5	1,035.0
1996	7,376.1	6,441.2	972.4	1,023.0
1997	7,345.6	6,273.1	1,198.9	998.6
1998	6,764.9	5,902.7	1,042.7	906.1
1999	6,034.4	5,257.1	1,072.2	814.7
2000	5,913.1	4,803.2	1,022.3	776.4
2001	5,687.8	4,781.9	968.8	770.2
2002	5,516.1	4,631.3	824.1	739.8
2003	4,871.2	4,436.5	708.4	701.8
2004	4,112.2	4,149.1	724.1	681.5
2005	4,149.6	3,974.9	746.2	679.1
2006	3,842.2	3,926.2	753.8	705.8
2007	4,026.1	3,989.2	790.8	685.8
2008	4,207.1	4,029.5	818.9	648.0
2009	3,929.0	3,792.7	718.3	586.6
2010	4,002.1	3,561.8	738.6	525.1
2011	4,301.8	3,550.9	712.3	501.7
2012	3,969.1	3,313.5	657.6	474.2
2013	4,061.8	3,151.2	630.8	460.0
2014	4,290.9	2,983.9	724.5	450.8
2015	4,464.9	2,871.3	829.7	455.3
2016	4,921.2	2,742.2	734.2	439.2
2017	4,143.5	2,571.8	658.9	417.7
2018	3,843.9	2,328.4	612.0	393.0
2019	3,272.5	2,170.1	573.0	382.3
2020	2,456.9	1,772.4	602.7	385.7
2021	2,294.9	1,583.2	619.4	369.1

Note: Offenses per 100,000. Property crimes include burglary, larceny, and motor vehicle theft. Violent crimes include murder, forcible sex offenses, robbery, and aggravated assault.

Source: Florida Department of Law Enforcement

Trend: On a per capita basis, the overall frequency of property crime in Leon County in 2021 was lower than any year in the past three decades, and violent crime frequency, although up from 2018-2020, was lower than any other year during 1991-2017.

Property Crime Rate



Violent Crime Rate

