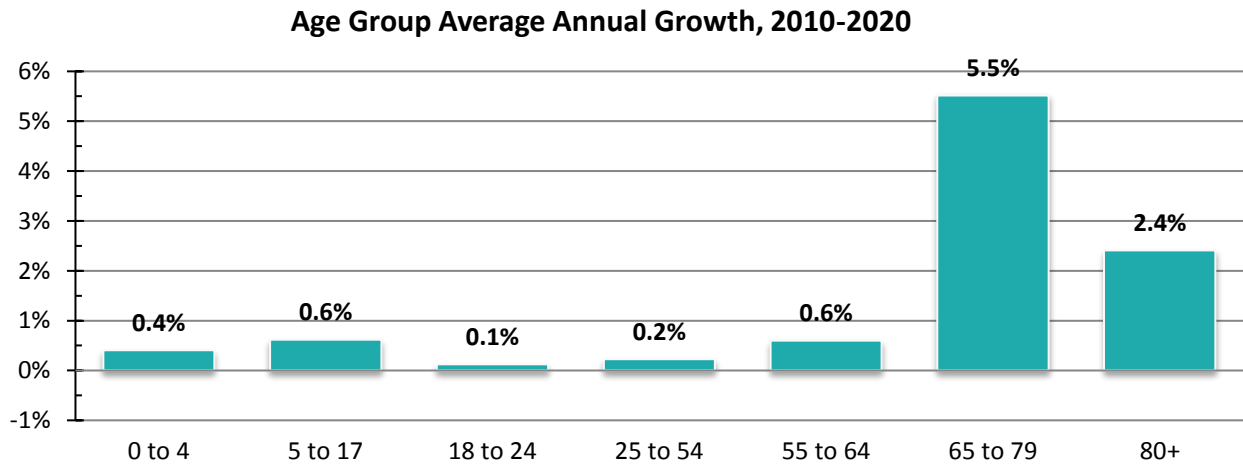


Trend: Although the 65-79 age group represents 11% of Leon County's total population, it is the fastest growing age group, growing at an annual rate of 5.5% per year during 2010-2020.

Age Group	2010 Population	2020 Population Estimate	Growth in Population 2010-2020	Percent Growth 2010-2020	Avg. Ann. Growth 2010-2020
0 to 4	15,350	15,983	633	4.0%	0.4%
5 to 17	38,623	41,099	2,476	6.2%	0.6%
18 to 24	61,897	62,686	789	1.3%	0.1%
25 to 54	103,907	106,298	2,391	2.3%	0.2%
55 to 64	29,730	31,569	1,839	6.0%	0.6%
65 to 79	18,962	32,917	13,955	55.2%	5.5%
80+	7,018	8,932	1,914	24.1%	2.4%
Total	275,487	299,484	23,997	8.4%	0.8%

Age Dependency Ratio* **40.9** **49.3**

*Ratio of population under age 18 and those age 65 and older, compared to population ages 18-64.



Source: University of Florida, Bureau of Economic & Business Research, "Florida Population Studies, Bulletin 190", June 2021